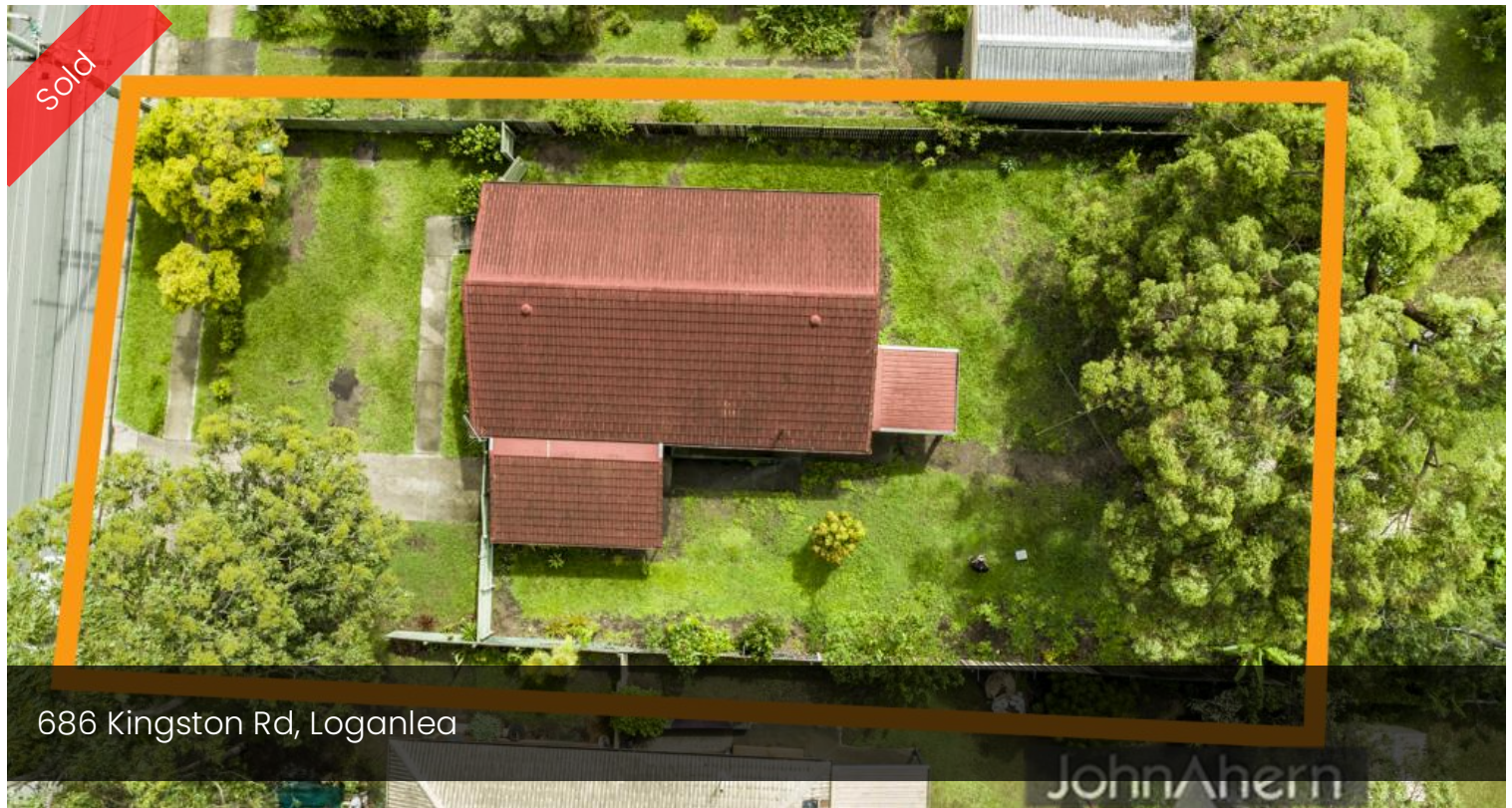


Sold



686 Kingston Rd, Loganlea

JohnAhern



JohnAhern



JohnAhern



JohnAhern

Solid Concrete Stucco & Tile Home...784M2 land

This concrete stucco and tiled roof home is situated on a level 784m2 block on a service road set back from Kingston road with easy access.

Features Include;

- * 3 Large Bedrooms
- * Main Bedroom with Built-in Robes
- * Spacious Lounge/Dining Combined
- * Large Kitchen with Heaps of Cupboard Space
- * Hardwood Timber Floors Throughout
- * Bathroom with Shower over Bath, Vanity plus Separate Toilet
- * Security Screens & Doors all Round
- * Single Carport with Gates

There is good fencing on 3 sides plus a garden shed in the

🚗 3 🏠 1 🚗 1 📏 784 m2

Price SOLD for
\$315,238

Property Type Residential

Property ID 2153

Land Area 784 m2

Agent Details

John Ahern - 0412 737 808

Office Details

Slacks Creek
12/390 Kingston Road Slacks
Creek QLD 4127 Australia
0412 737 808



rear yard.

With major shopping and public transport just minutes away this is a great buy for an owner occupier or equally good for a savvy investor.

The above information provided has been furnished to us by the vendor/s. We have not verified whether or not that information is accurate and do not have any belief in one way or the other in its accuracy. We do not accept any responsibility to any person for its accuracy and do no more than pass it on. All interested parties should make and rely upon their own inquiries in order to determine whether or not this information is in fact accurate.